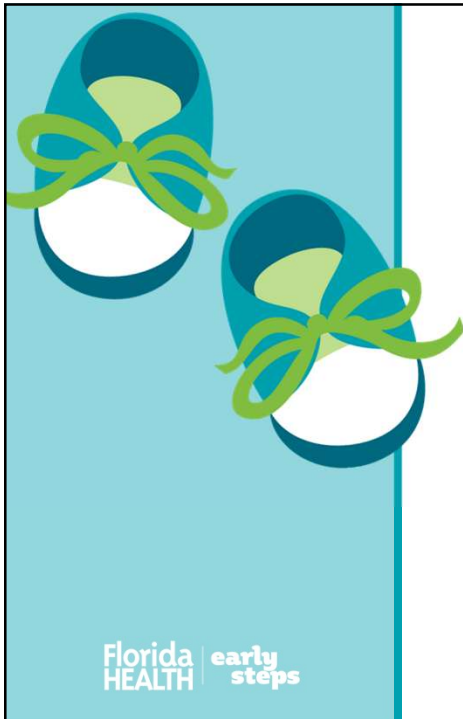
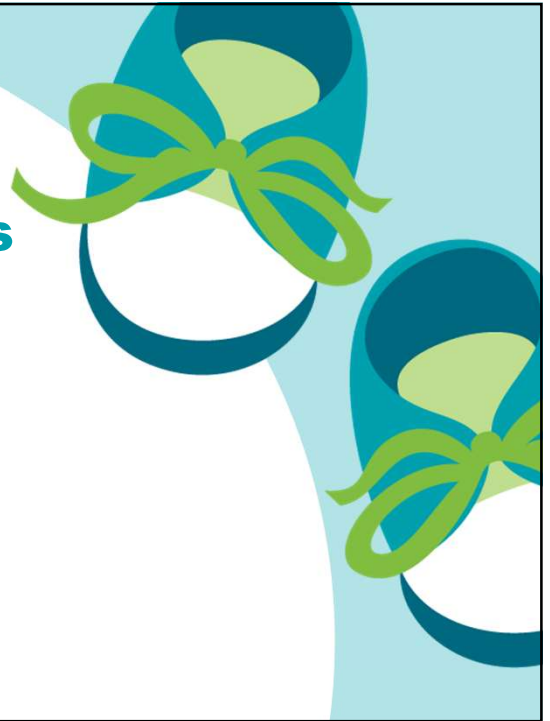


# Florida Interagency Coordinating Council for Infants and Toddlers Meeting

## Early Steps Program

Division of Children's Medical Services  
Florida Department of Health  
May 7, 2026



## Council Roll Call

# AGENDA: MAY 7, 2026

- Call to Order and Standing Items
- Department of Health Updates
- Data Review
- Early Steps Data System Demonstration
- Website Language Review
- Public Comment
- Closing Announcements

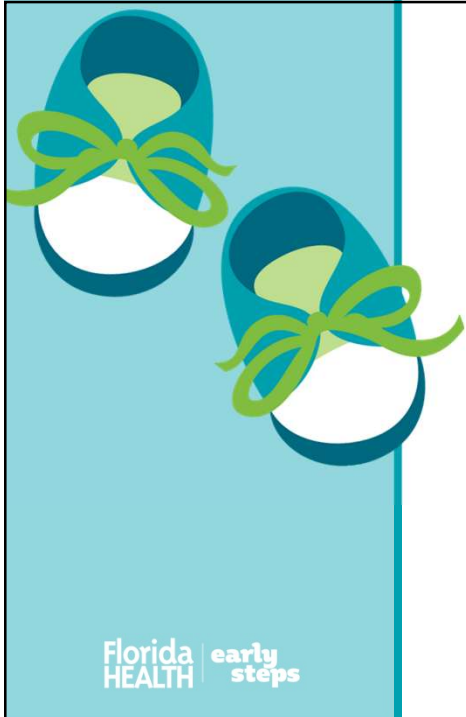
3

# MEETING MINUTES



**Review and Approve Meeting Minutes**

4



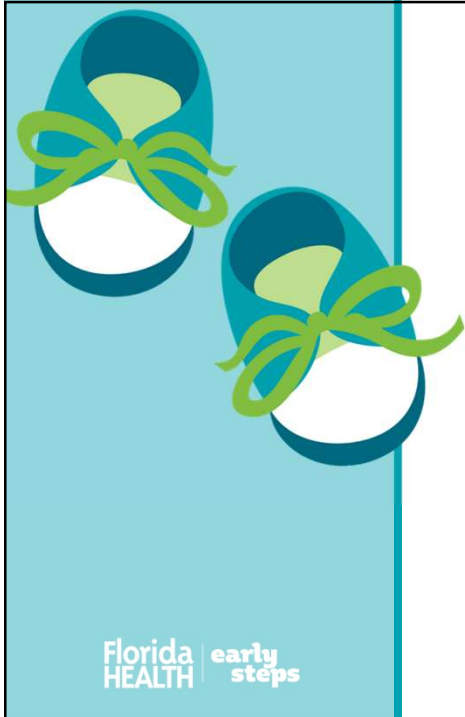
## Department of Health Updates

### CURRENT PROJECT UPDATES

Early Steps Data  
System

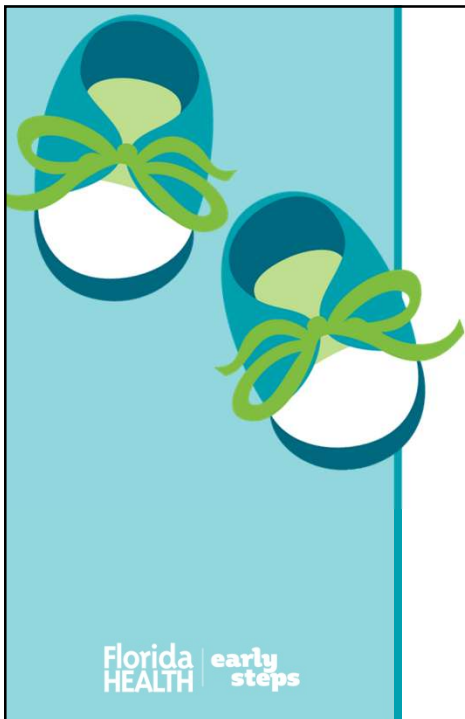
Early Steps  
Extended Option

Public Consulting  
Group Project  
Update



## **Subcommittee Next Steps Data Review for:**

- Quality and Accountability
- Child and Family Outcomes



## **Local Early Steps (LES) Child Find by Type:**

- Hospital
- University
- Community Organization

## DATA REQUEST

Are referral rates for children ages 0–1 higher in LES programs with hospital parent organizations?

9

## LES PARENT ORGANIZATION CATEGORY

### Hospital

- Central Florida
- Gold Coast
- West Central
- Western Panhandle

### University

- Bay Area
- North Central
- North Dade
- Northeastern

### Community Organization

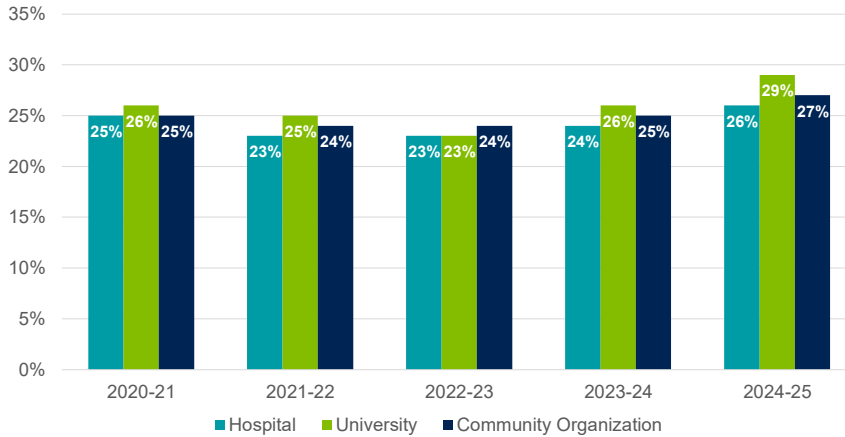
- Big Bend
- Gulf Central
- North Beaches
- Southernmost Coast
- Southwest Florida
- Space Coast
- Treasure Coast

10

AS1

# REFERRAL PERCENTAGES BY AGE, 0-1

Children Ages 0-1 Referred as a Percentage of All Referrals, Average by LES Type



Of all children referred to Early Steps, this shows the percentage who were referred between ages 0 and 1.

Each column shows the average rate across all LES programs within that parent-organization category.

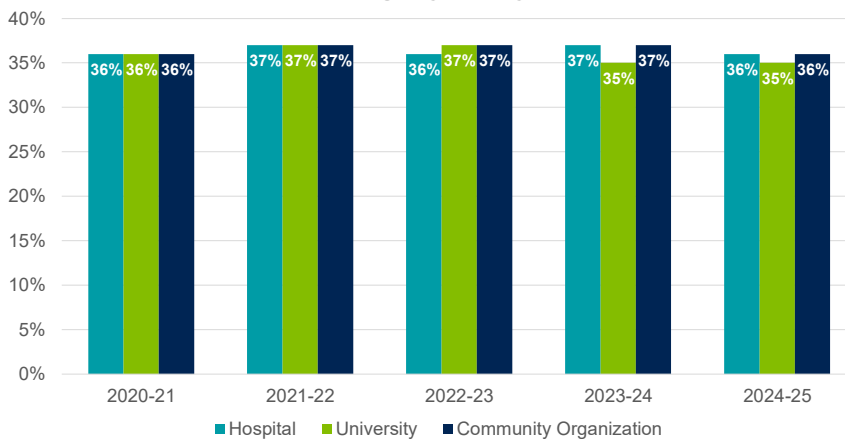
11



AS1

# REFERRAL PERCENTAGES BY AGE, 1-2

Children Ages 1-2 Referred as a Percentage of All Referrals, Average by LES Type



Of all children referred to Early Steps, this shows the percentage who were referred between ages 1 and 2.

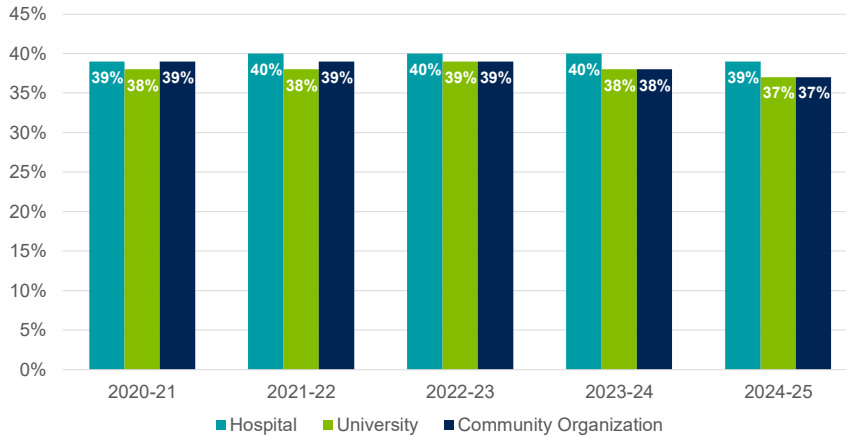
Each column shows the average rate across all LES programs within that parent-organization category.

12



# REFERRAL PERCENTAGES BY AGE, 2-3

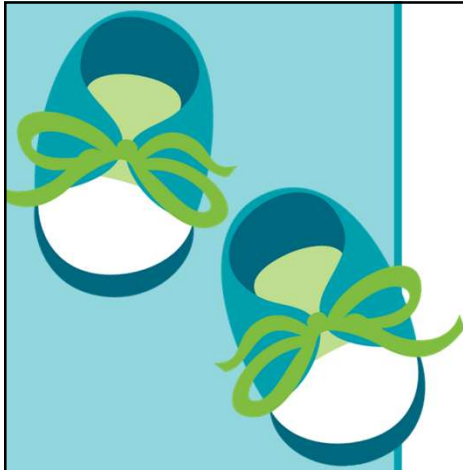
Children Ages 2-3 Referred as a Percentage of All Referrals, Average by LES Type



Of all children referred to Early Steps, this shows the percentage who were referred between ages 2 and 3. AS1

Each column shows the average rate across all LES programs within that parent-organization category.

13



## Provider Network Adequacy and Outcomes Trends



# DATA REQUEST

Compare the number of children and providers with the child, family, and timeliness outcomes.

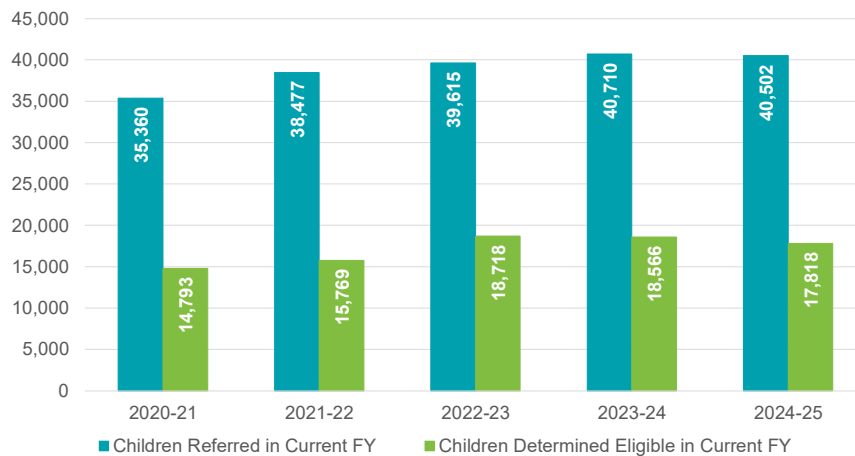
15



AS1

# FIVE YEAR TRENDS: CHILD COUNT

Statewide Child Trends Over Five Years



**Children referred in current fiscal year (FY):**  
Children referred to Early Steps, regardless of eligibility outcome.

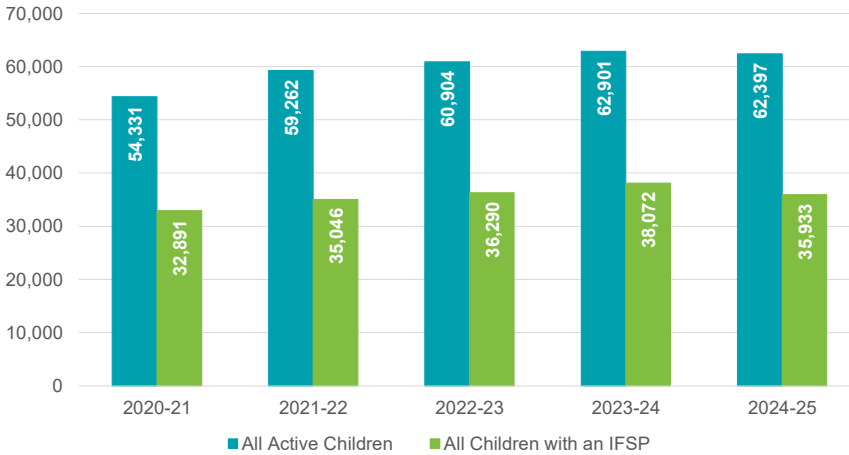
**Children determined eligible in current FY:**  
All children who receive a new Individualized Family Support Plan (IFSP) in the current FY.

16



# FIVE YEAR TRENDS: CHILD COUNT

Statewide Child Trends Over Five Years



**All active children:**  
Children who received at least one service, including those referred and determined ineligible.

**All children with an IFSP:**  
All children who have an IFSP at any point in the FY.

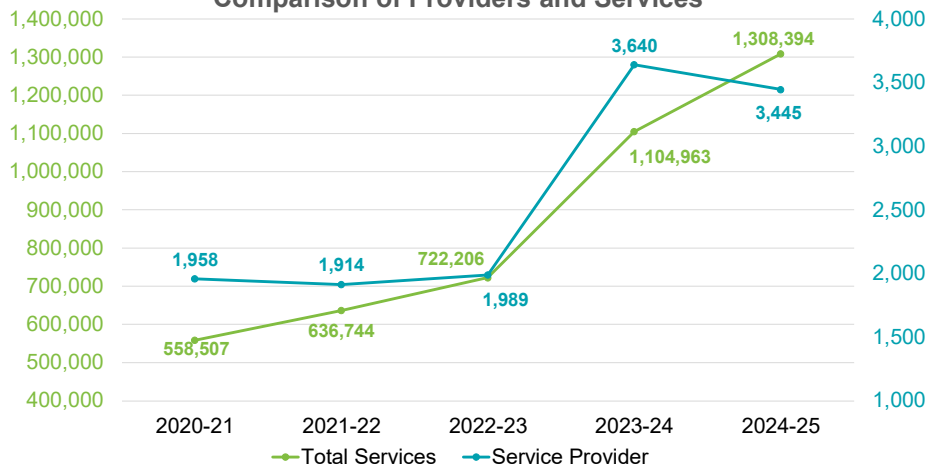


17

KE2

# COMPARISON BETWEEN SERVICE PROVIDER NETWORK AND TOTAL SERVICES PROVIDED

Comparison of Providers and Services



**Note:**  
This data excludes service coordinators and services provided by service coordinators.

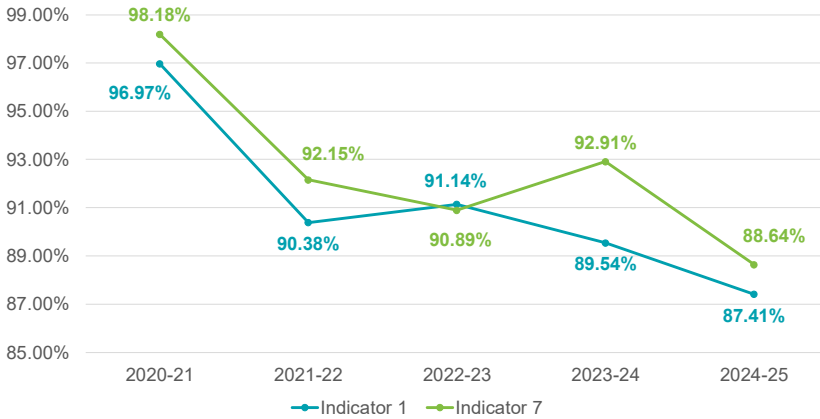
18

This data reflects only the services billed through the previous data system. The new data system will capture all services, regardless of billing source. Until the transition is fully resolved, any conclusions or decisions should be made with appropriate caution.



# FIVE YEAR TRENDS: STATE TIMELINESS

Statewide Timeliness Outcomes Over Five Years

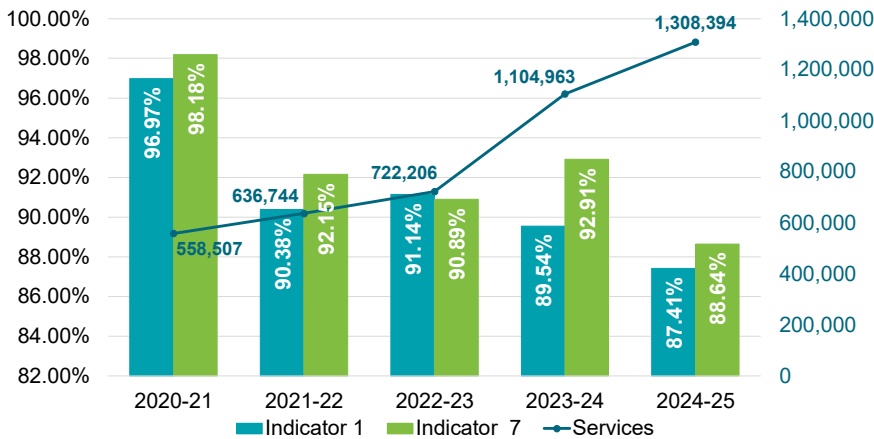


**Indicator 1:**  
Percentage of children who received services within 30 days of their IFSP.

**Indicator 7:**  
Percentage of eligible infants and toddlers who received an IFSP within 45 days.

# TIMELINESS COMPARED TO THE NUMBER OF SERVICES PROVIDED

Timeliness Indicators Compared to Number of Services



**Indicator 1:**  
Percentage of children who received services within 30 days of their IFSP.

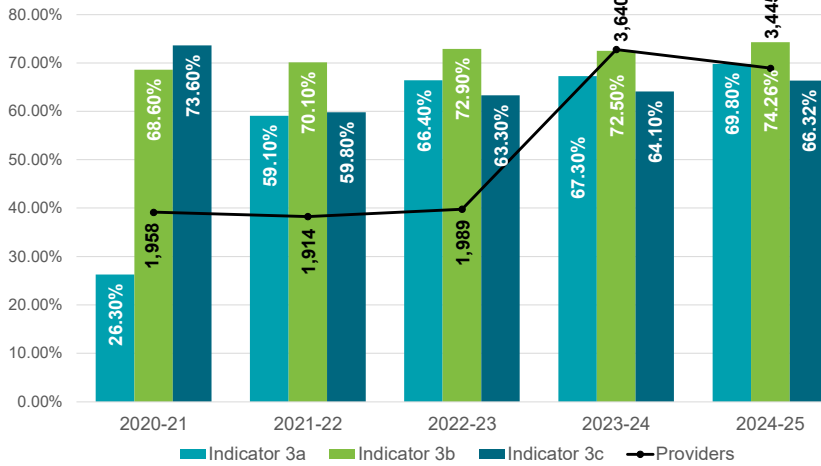
**Indicator 7:**  
Percentage of eligible infants and toddlers who received an IFSP within 45 days.

**Services:**  
The number of services delivered by providers, excluding service coordinators.

This data reflects only the services billed through the previous data system. The new data system will capture all services, regardless of billing source. Until the transition is fully resolved, any conclusions or decisions should be made with appropriate caution.

# STATE CHILD OUTCOMES COMPARED TO THE PROVIDER NETWORK

Child Outcomes Compared to Number of Providers



**Indicator 3a:**  
Percentage of eligible children showing improved social and emotional skills.

**Indicator 3b:**  
Percentage of eligible children showing improved knowledge and communication.

**Indicator 3c:**  
Percentage of eligible children showing improved use of appropriate behaviors to meet their needs.

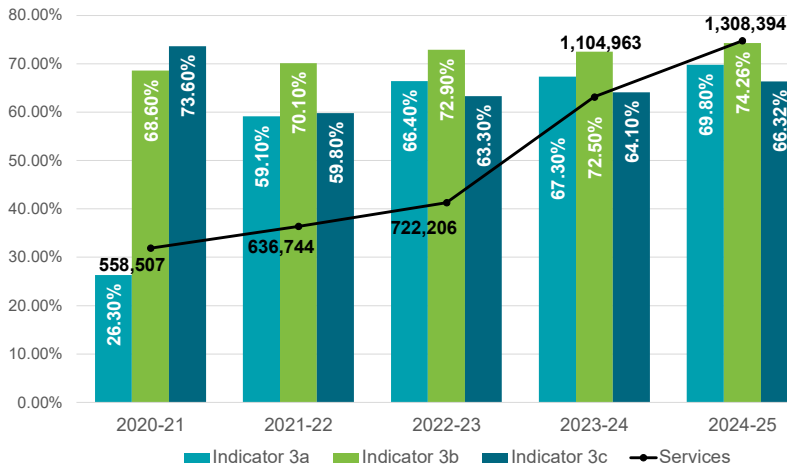
**Services:**  
The number of services delivered by providers, excluding service coordinators

21 This data reflects only the services billed through the previous data system. The new data system will capture all services, regardless of billing source. Until the transition is fully resolved, any conclusions or decisions should be made with appropriate caution.



# STATE CHILD OUTCOMES COMPARED TO THE NUMBER OF SERVICES PROVIDED

Child Outcomes Compared to Number of Services



**Indicator 3a:**  
Percentage of eligible children showing improved social and emotional skills.

**Indicator 3b:**  
Percentage of eligible children showing improved knowledge and communication.

**Indicator 3c:**  
Percentage of eligible children showing improved use of appropriate behaviors to meet their needs.

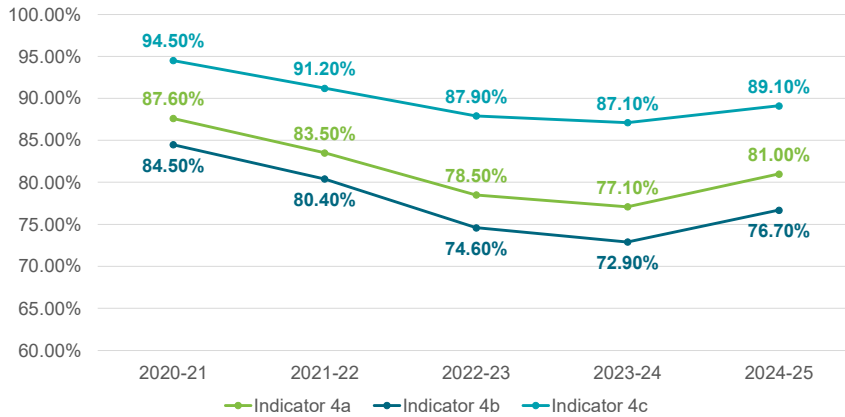
**Services:**  
The number of services delivered by providers, excluding service coordinators

22 This data reflects only the services billed through the previous data system. The new data system will capture all services, regardless of billing source. Until the transition is fully resolved, any conclusions or decisions should be made with appropriate caution.



# FIVE YEAR TRENDS: STATE FAMILY OUTCOMES

Statewide Family Outcomes Over Five Years



**Indicator 4a:**

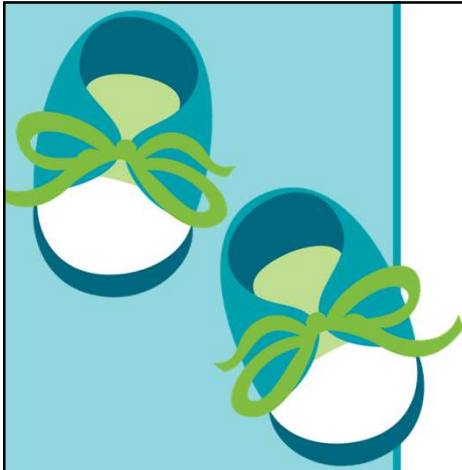
Percentage of families who report that early intervention services helped them know their rights.

**Indicator 4b:**

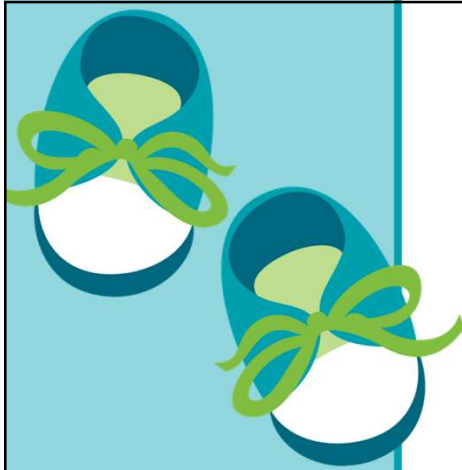
Percentage of families who report that early intervention helped effectively communicate their child's needs.

**Indicator 4c:**

Percentage of families who report that early intervention helped them support their child's development.



## Early Steps Data System Demonstration



Florida HEALTH | early steps

## Public Awareness Subcommittee

### Next Steps:

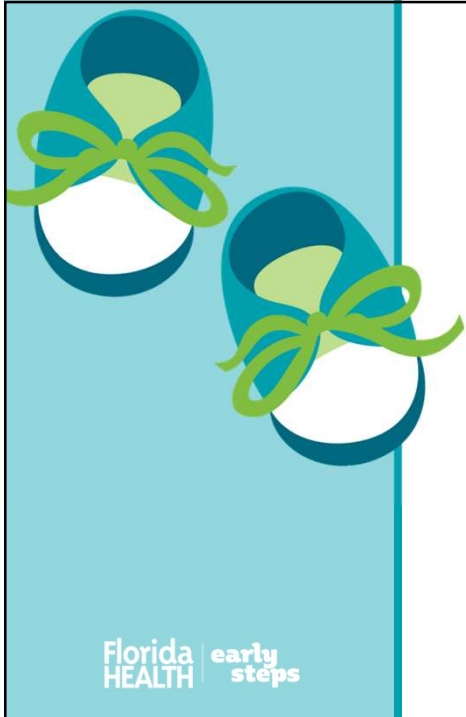
- Website Language Review

## WEBSITE LANGUAGE REVIEW

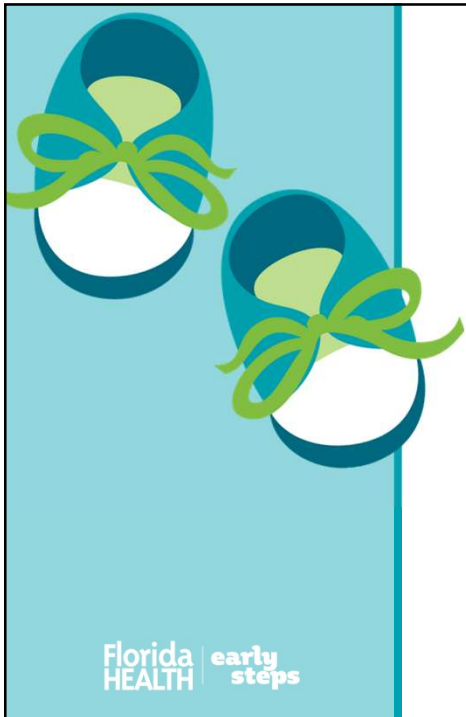
The screenshot shows the Florida Early Steps website home page. At the top left is the 'early steps' logo. The navigation menu includes: ABOUT, ELIGIBILITY AND ENROLLMENT, FAMILIES, PROVIDERS AND STAKEHOLDERS, POLICIES AND REPORTING, and CONTACT. The main content area features a photograph of a family (father, mother, young girl, and baby) sitting together. Below the photo is the headline: 'Every child develops at their own pace. Early Steps helps them along the way.' A sub-headline reads: 'Early Steps provides early intervention services to infants and toddlers, from birth to 36 months, with developmental delays, disabilities and at-risk conditions at no cost to families.' Two call-to-action buttons are present: 'VIEW ELIGIBILITY' and 'MAKE A REFERRAL'.

[Home - FDOH Early Steps](#)

Florida HEALTH | early steps



## Public Comment



## Closing Announcements

# Adjourn

Florida  
HEALTH | early  
steps

